

# Springbrook Meadows

Located adjacent to Providence Newberg Medical Center and Chehalem Glenn Golf Course, Springbrook Meadows is the newest independent living neighborhood for Friendsview.

Springbrook Meadows homes feature spacious 2-bedroom and 2-bedroom with den floorplans with private enclosed garages in a beautiful setting.

Springbrook Meadows offers all the amenities of our campus neighborhoods, combined with the independent lifestyle you want. What's more, Springbrook Meadows residents have the same continuing care benefits that come with living at Friendsview. If you are looking for the security of continuing care combined with an independent retirement lifestyle, Springbrook Meadows is right for you.

- Enclosed garage
  - Indoor/outdoor maintenance
  - Water, sewage, garbage
  - Up to 15 days in the Health Center if needed
  - Property taxes and insurance
  - Scheduled transportation
  - Garden access
  - Outdoor patio
  - Fireplace
  - Neighborhood community center
  - Washer/dryer
  - Non-smoking
  - Housekeeping (optional)
  - Meal plans (optional)\*
  - Long term care options\*
  - Fitness Center, social and recreational programs\*
- \* Available at the Friendsview main campus, 1301 Fulton Street



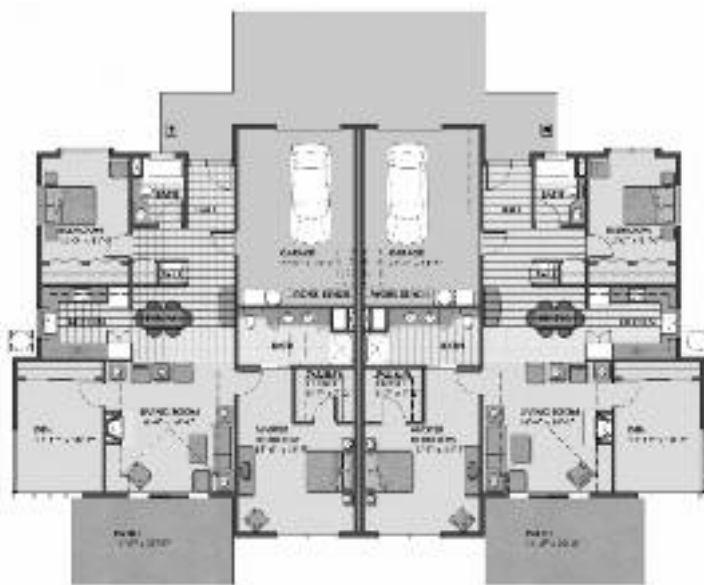
Cottage AA

## RATES

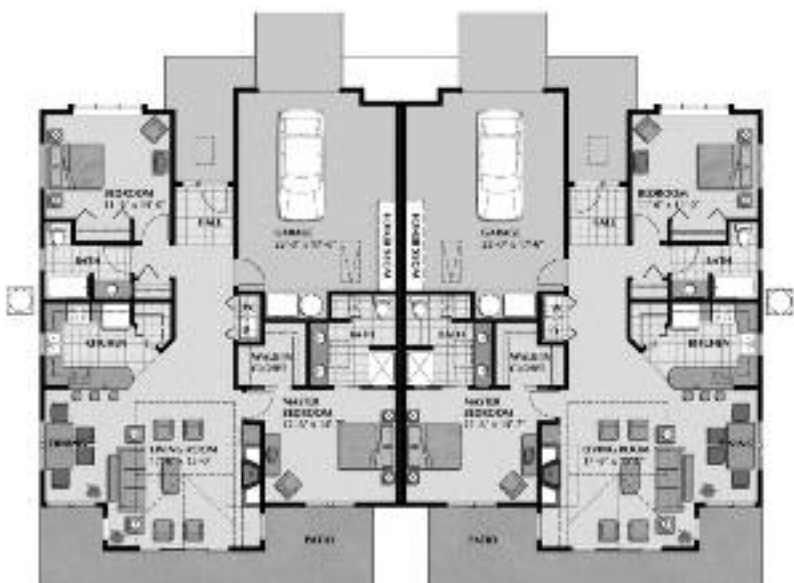
Type	Size	Entrance Fee	Monthly Fee
Cottage AA Two-Bedroom with Den/Two Bath	1,552 sq. ft.	\$237,925	\$1,397
Cottage BB Two-Bedroom with Den/Two Bath	1,453 sq. ft.	\$222,745	\$1,308
Cottage C Two-Bedroom/Two Bath	1,321 sq. ft.	\$202,510	\$1,189

Second person fee \$615 per month

# Springbrook Meadows



Cottage BB



Cottage C